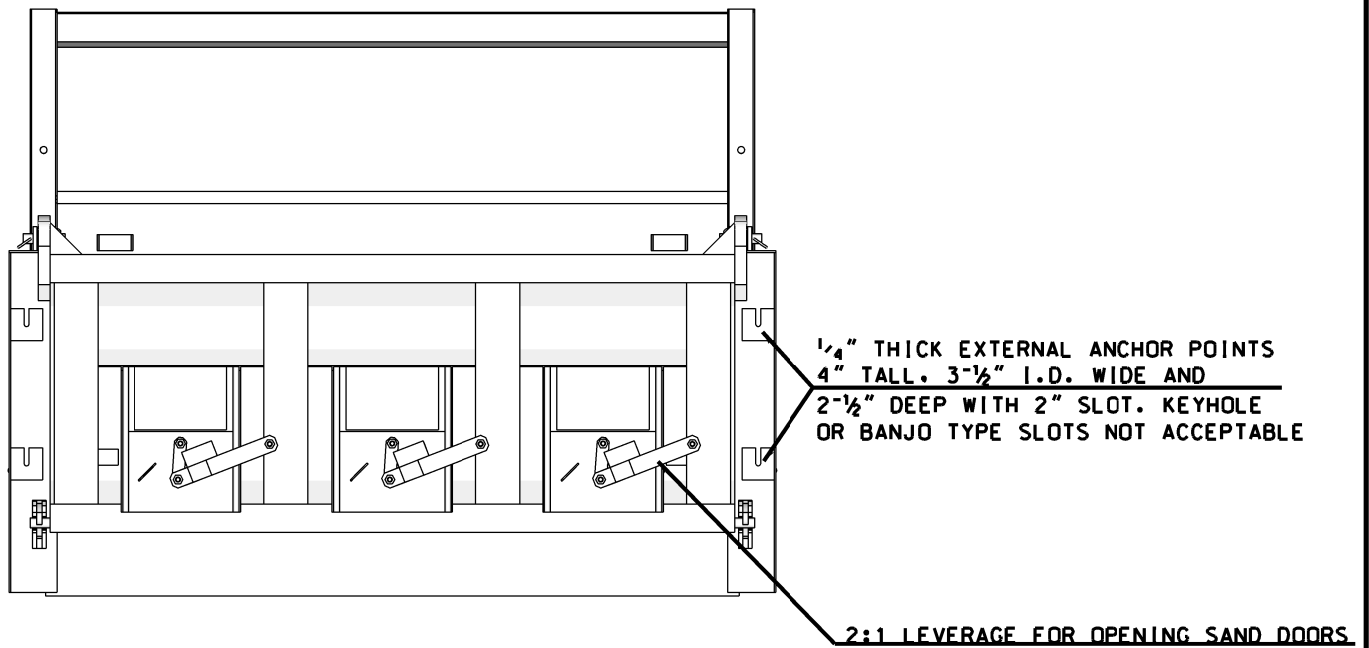


THREE SAND DOORS ON TAILGATE WITH NO REINFORCEMENT ON INSIDE OF DOOR



NOTES:

1. MINIMUM 8 GAUGE ABRASION RESISTANT STEEL CONSTRUCTION THROUGHOUT HAVING MINIMUM 50,000 PSI YIELD STRENGTH EXCEPT WHERE MATERIAL IS SPECIFICALLY NOTED.
2. FLOOR TO SIDEWALL TO BE FULLY WELDED ONE PIECE 1/4" AR400 STEEL FLOOR.
3. REAR APRON, CORNER POSTS AND FRONT AND REAR SIDEBOARDS POCKETS TO BE 304 STAINLESS STEEL.
4. ALL BODY PLATES SHALL BE ONE PIECE (NO SPLICING)
5. ALL WELDS IN BODY ARE TO BE CONTINUOUS.

SPEC. PLAN IS ONLY FOR INFORMATIONAL PURPOSES. WRITTEN SPEC. IS THE ULTIMATE AUTHORITY.



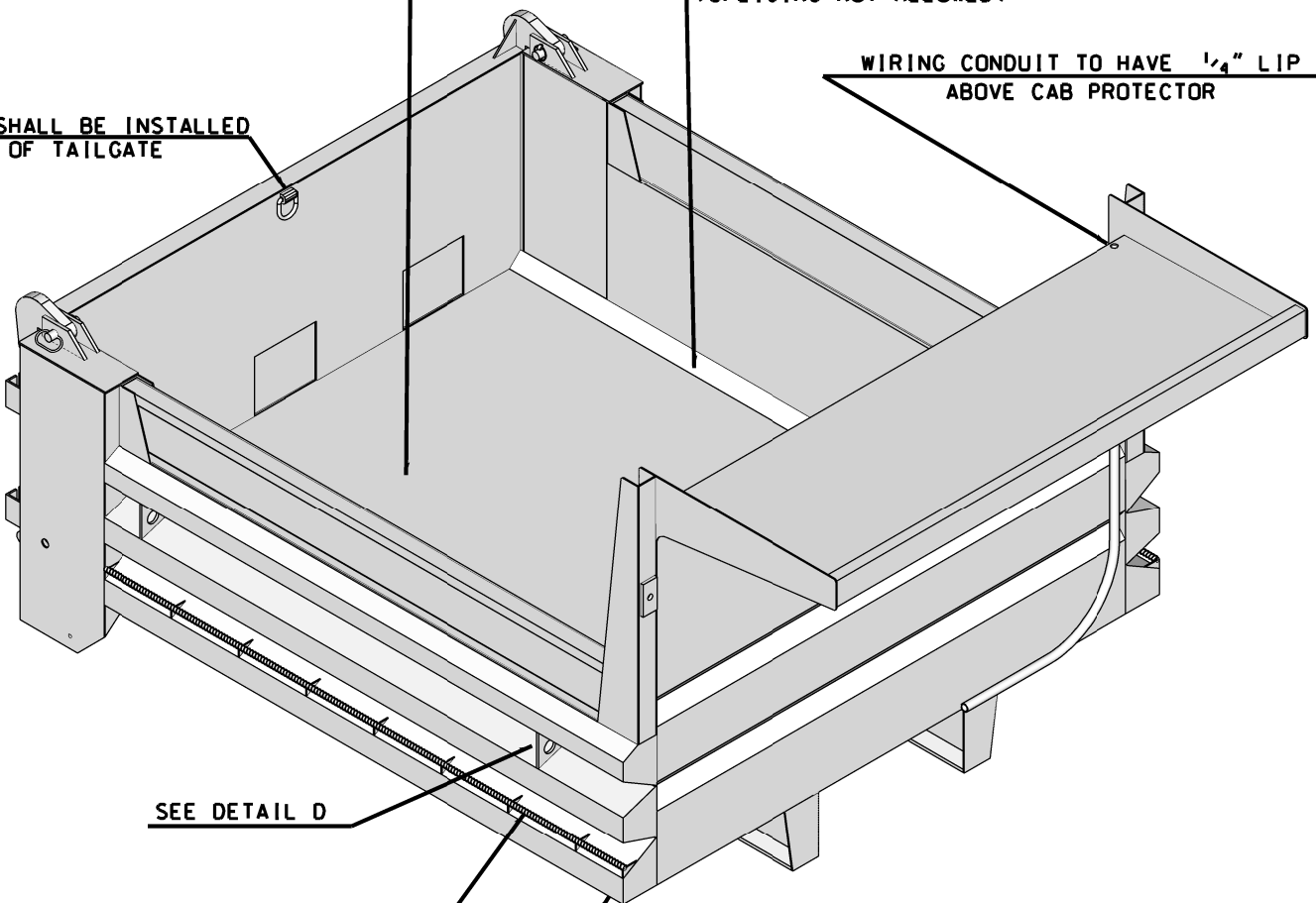
STATE OF NEW HAMPSHIRE			
DEPARTMENT OF TRANSPORTATION • BUREAU OF MECHANICAL SERVICES			
4 - 6 CUBIC YARD CROSS MEMBER-LESS DUMP BODY			
DRAFTED DATE	REVISION DATE	SHEET NO.	TOTAL SHEETS
11-20-12	--	1	7

INSIDE DIMENSIONS 9' LONG X 7' WIDE
4-YARD WATER LEVEL WITH 6-YARD ENDS

2" RADIUS OR 2" X 2" BUMP FORMED CHAMFER
(SPLICING NOT ALLOWED)

WIRING CONDUIT TO HAVE 1/4" LIP
ABOVE CAB PROTECTOR

"D" RING SHALL BE INSTALLED
ON INSIDE OF TAILGATE



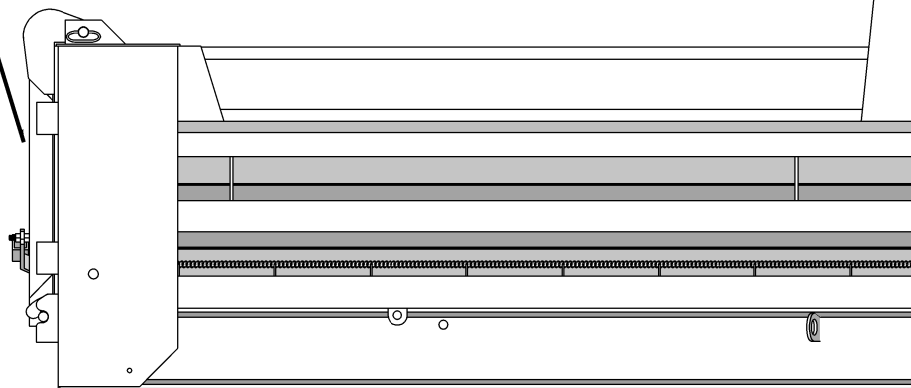
SEE DETAIL D

TIE DOWN RAILS CONSTRUCTED FROM
5/8" REBAR ON 1 1/4" RISERS

8" MINIMUM FULL LENGTH PLEATED HORIZONTAL
BRACE BETWEEN TOP RAIL AND RUB RAIL

32" CAB PROTECTOR
CAB PROTECTOR HEIGHT TO BE
DETERMINED BY STATE AGENCY

FULL BOX CONSTRUCTION TAILGATE REINFORCED WITH
VERTICAL AND HORIZONTAL BOX BRACING MUST BE
CAPABLE OF SWINGING OPEN THROUGH 180 DEGREE ARC



SEE DETAIL A & C



SCALE IN FEET

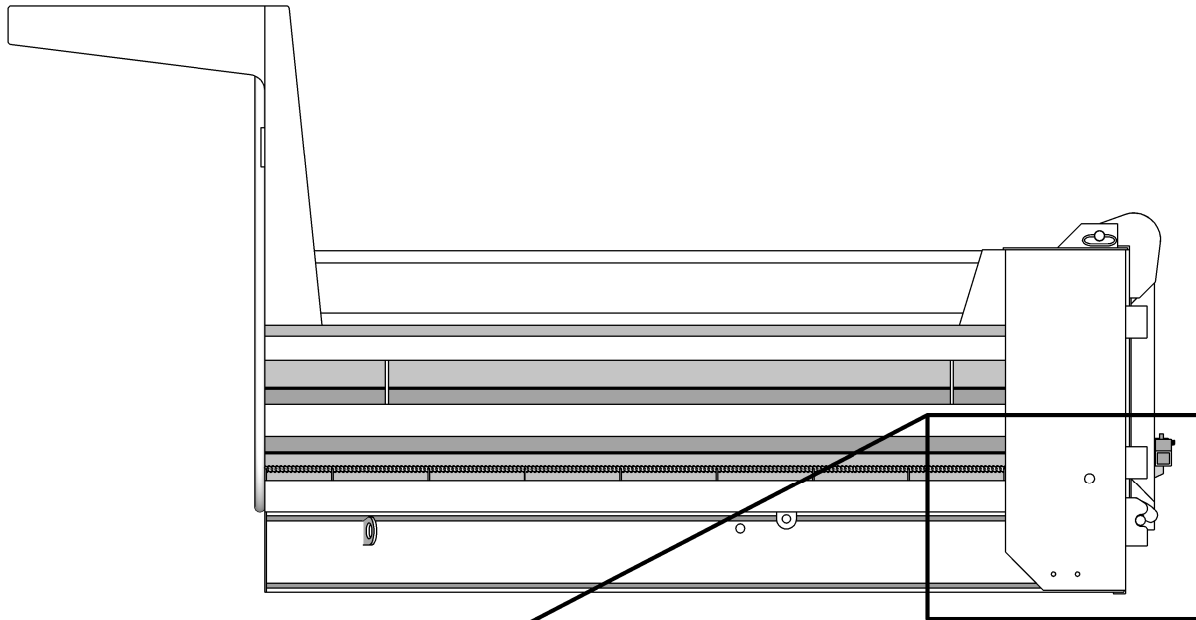
SPEC. PLAN IS ONLY FOR INFORMATIONAL
PURPOSES. WRITTEN SPEC. IS THE ULTIMATE
AUTHORITY.

STATE OF NEW HAMPSHIRE

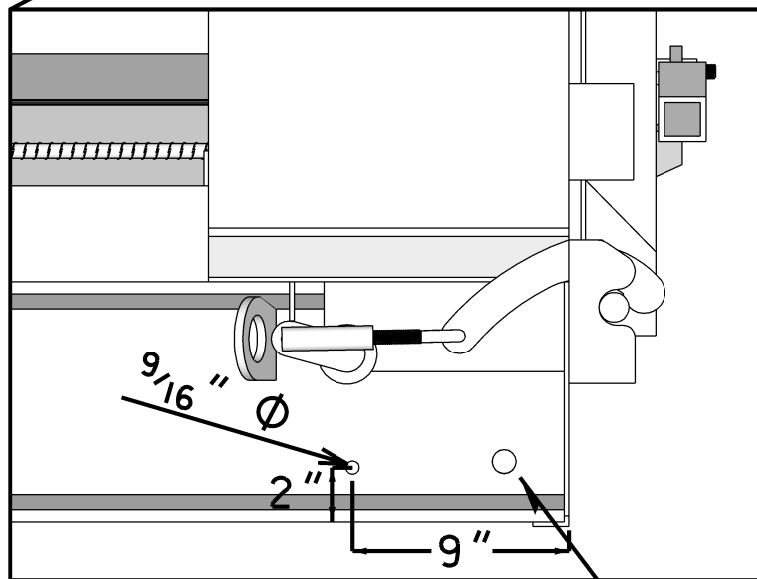
DEPARTMENT OF TRANSPORTATION • BUREAU OF MECHANICAL SERVICES

**4 - 6 CUBIC YARD CROSS
MEMBER-LESS DUMP BODY**

DRAFTED DATE	REVISION DATE	SHEET NO.	TOTAL SHEETS
11-20-12	10-24-13	2	7



DETAIL A



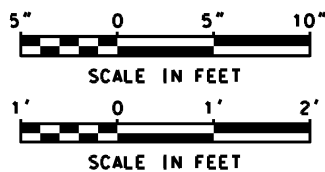
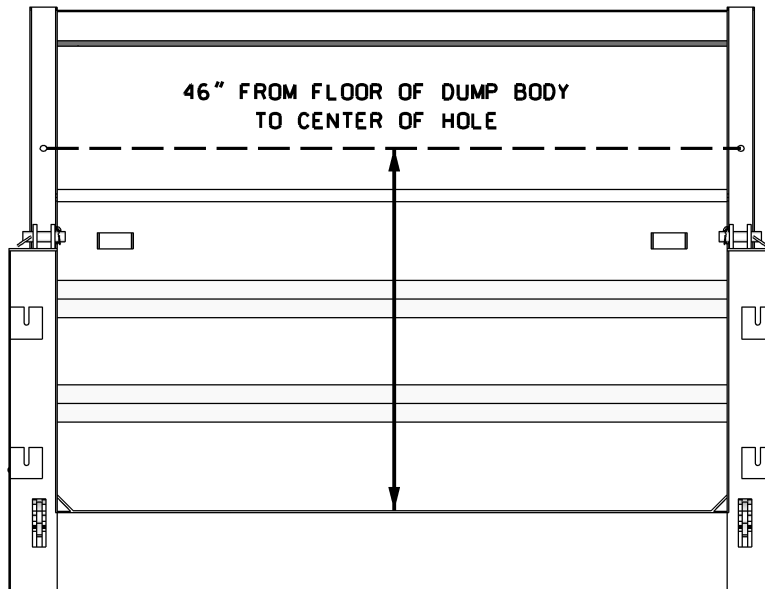
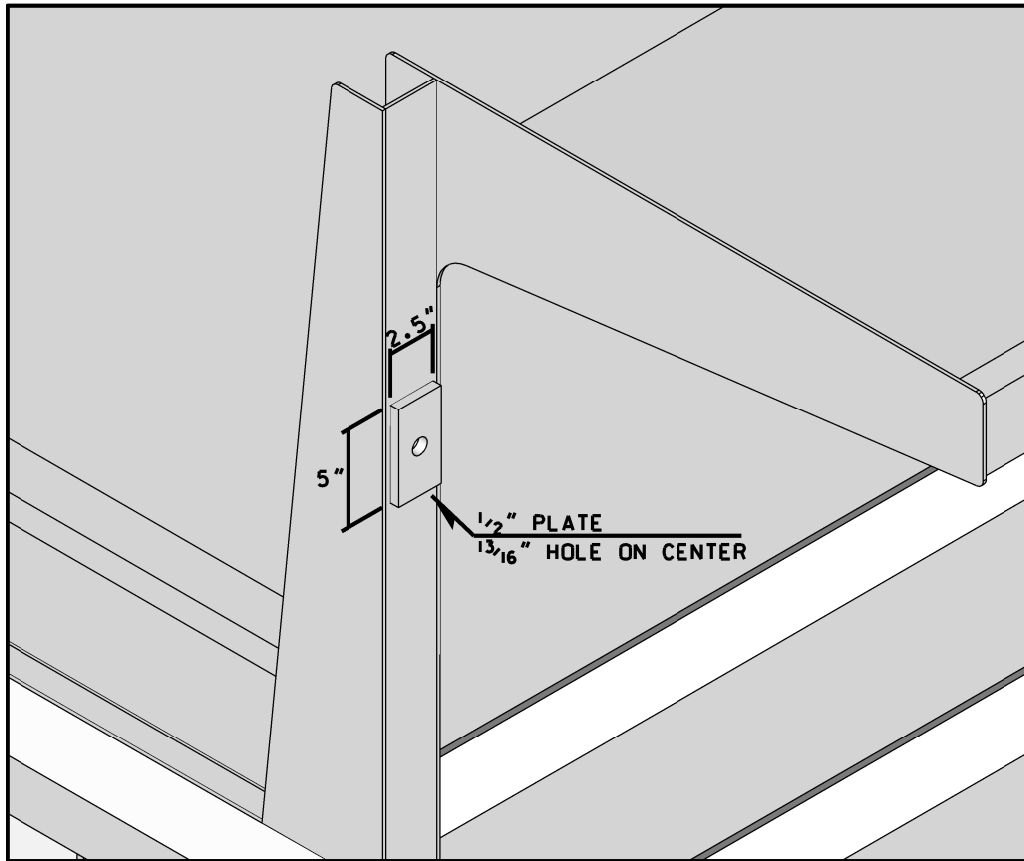
1" HOLE LOCATED IN WEB OF I-BEAM AS CLOSE TO
REAR APRON AS POSSIBLE AND LOWER FLANGE AS POSSIBLE



*SPEC. PLAN IS ONLY FOR INFORMATIONAL
PURPOSES. WRITTEN SPEC. IS THE ULTIMATE
AUTHORITY.*

STATE OF NEW HAMPSHIRE			
DEPARTMENT OF TRANSPORTATION • BUREAU OF MECHANICAL SERVICES			
4 - 6 CUBIC YARD CROSS MEMBER-LESS DUMP BODY			
DRAFTED DATE	REVISION DATE	SHEET NO.	TOTAL SHEETS
11-20-12	--	3	7

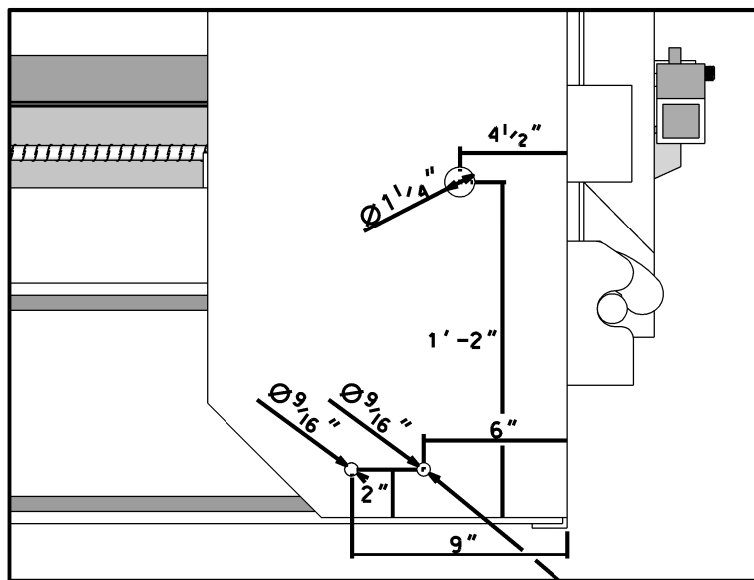
DETAIL B



SPEC. PLAN IS ONLY FOR INFORMATIONAL PURPOSES. WRITTEN SPEC. IS THE ULTIMATE AUTHORITY.

STATE OF NEW HAMPSHIRE			
DEPARTMENT OF TRANSPORTATION • BUREAU OF MECHANICAL SERVICES			
4 - 6 CUBIC YARD CROSS MEMBER-LESS DUMP BODY			
DRAFTED DATE	REVISION DATE	SHEET NO.	TOTAL SHEETS
11-20-12	--	4	7

DETAIL C



HOLE LOCATED ON LEFT SIDE ONLY



SPEC. PLAN IS ONLY FOR INFORMATIONAL PURPOSES. WRITTEN SPEC. IS THE ULTIMATE AUTHORITY.

STATE OF NEW HAMPSHIRE

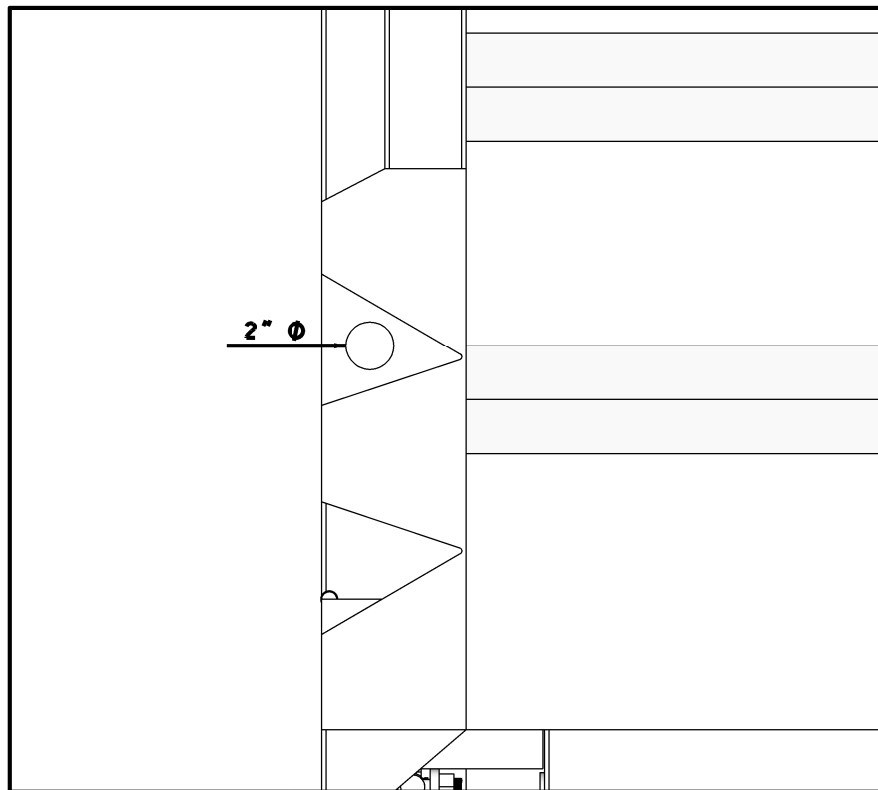
DEPARTMENT OF TRANSPORTATION • BUREAU OF MECHANICAL SERVICES

**4 - 6 CUBIC YARD CROSS
MEMBER-LESS DUMP BODY**

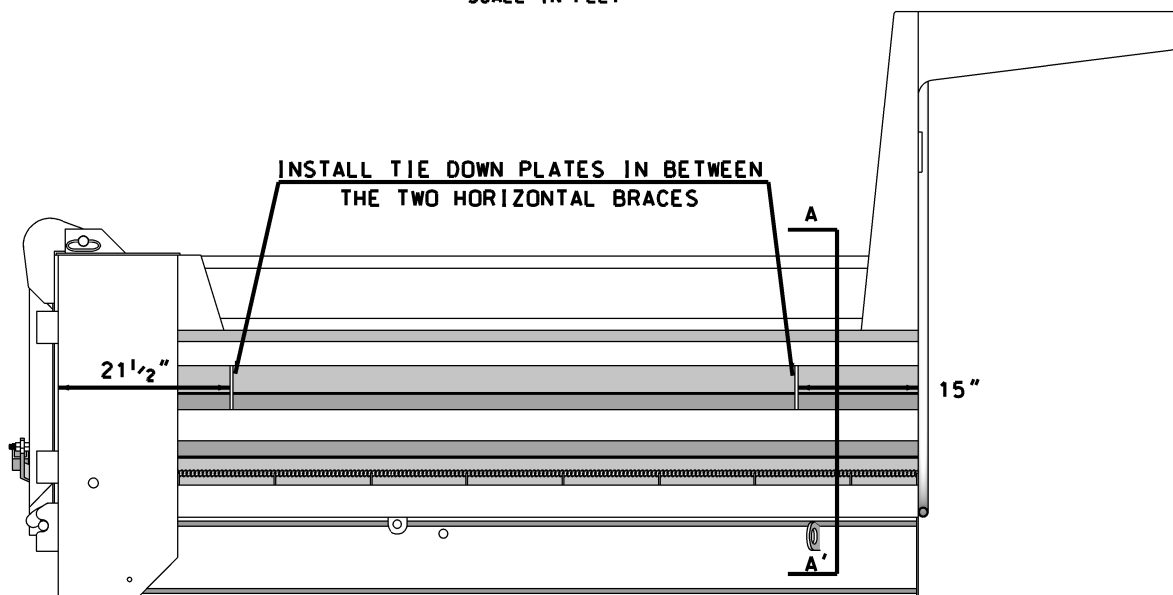
DRAFTED DATE	REVISION DATE	SHEET NO.	TOTAL SHEETS
11-20-12	--	5	7

DETAIL D

SECTION A - A'



4" 0 4" 8"
SCALE IN FEET

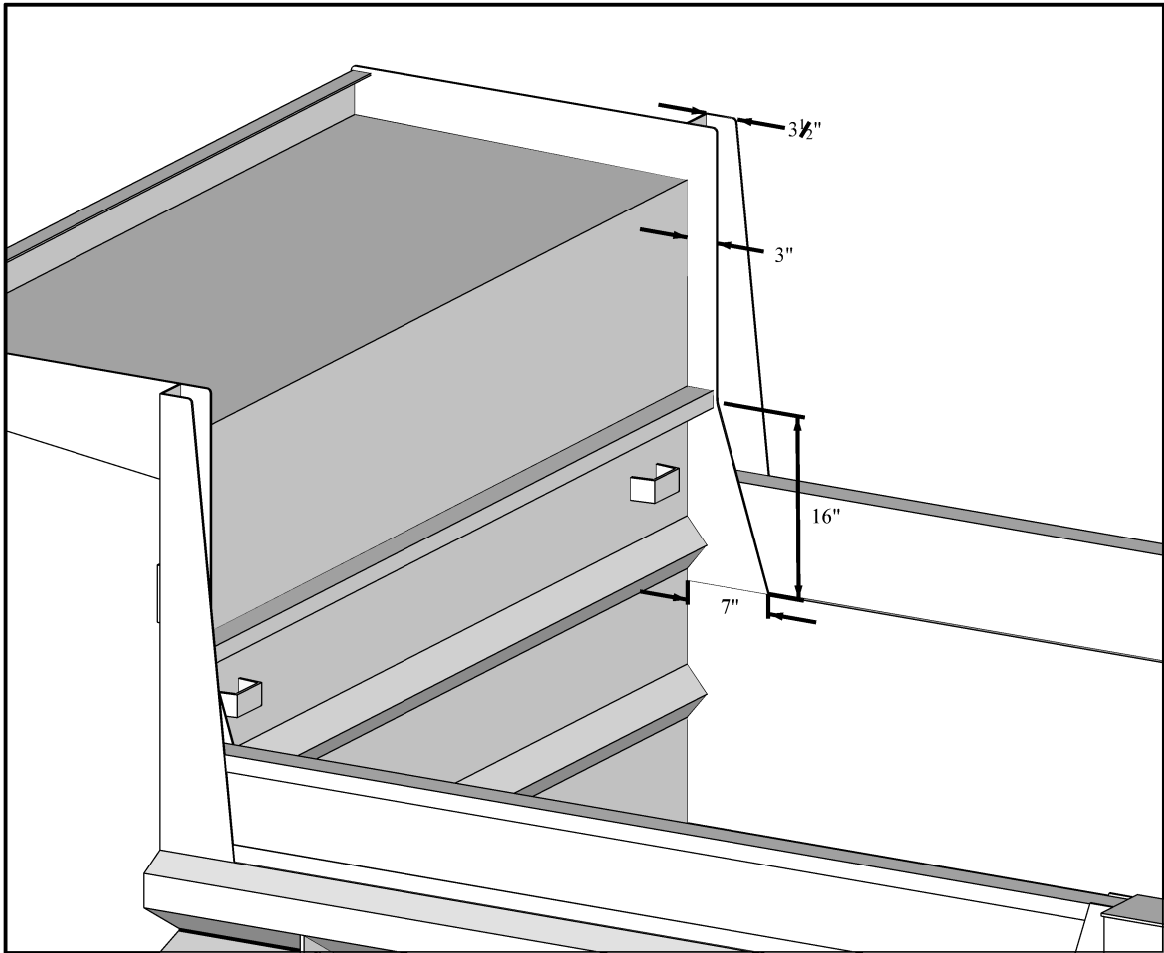


1 0 1 2
SCALE IN FEET

SPEC. PLAN IS ONLY FOR INFORMATIONAL PURPOSES. WRITTEN SPEC. IS THE ULTIMATE AUTHORITY.

STATE OF NEW HAMPSHIRE			
DEPARTMENT OF TRANSPORTATION • BUREAU OF MECHANICAL SERVICES			
4 - 6 CUBIC YARD CROSS MEMBER-LESS DUMP BODY			
DRAFTED DATE	REVISION DATE	SHEET NO.	TOTAL SHEETS
11-20-12	--	6	7

DETAIL E



INTERIOR SIDEBOARD POCKET PLATE TO
TO BE 3" MAX. TO AVOID INTERFERING
WITH HYDRAULIC SLIDE-IN SPREADER
HOLD DOWN DEVICE.

*SPEC. PLAN IS ONLY FOR INFORMATIONAL
PURPOSES. WRITTEN SPEC. IS THE ULTIMATE
AUTHORITY.*

STATE OF NEW HAMPSHIRE			
DEPARTMENT OF TRANSPORTATION • BUREAU OF MECHANICAL SERVICES			
4 - 6 CUBIC YARD CROSS MEMBER-LESS DUMP BODY			
DRAFTED DATE	REVISION DATE	SHEET NO.	TOTAL SHEETS
11-5-13	--	7	7